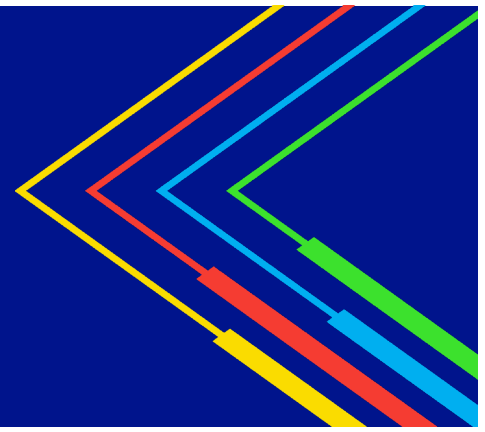


# Project Courtesy Notice

## Upcoming Transmission Line Work

### Somerset to Bridgewater Reliability Project

Somerset, Swansea, Dighton, Berkley, Taunton, Raynham, Bridgewater MA



May 6, 2024

Dear Neighbor,

National Grid continues to make improvements to strengthen our electric transmission systems and more reliably serve our customers in your area. This includes replacing existing aging transmission line structures within the right-of-way near your home or business with new steel structures.

Currently pre-construction activities are continuing along the corridor, including soil borings and cultural borings, to progress the engineering efforts associated with an upcoming project. The project, known as the Somerset to Bridgewater Reliability Project, is planned to kick-off this summer.

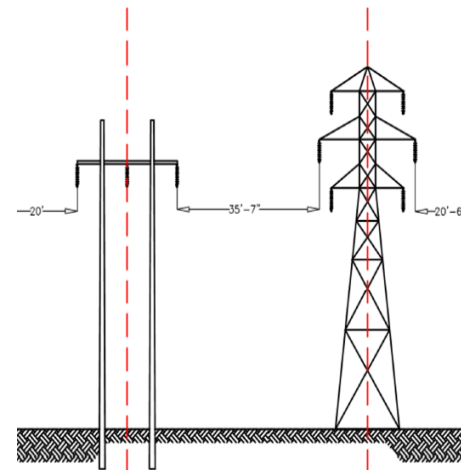
Starting as soon as this July, crews will begin this multi-year project to replace existing structures along an approximately 20-mile corridor with new light duty galvanized steel structures. New structure types (see right for illustration) will be used within the transmission right-of-way and the location of structures may vary from existing locations to meet engineering standards and prioritize environmental protections.

Most work areas will be accessible from public streets that cross the right of way at various locations or utilize access routes outside the right of way that have been used in the past. In cases where access is not possible via public ways or easements, we coordinate access directly with property owners.

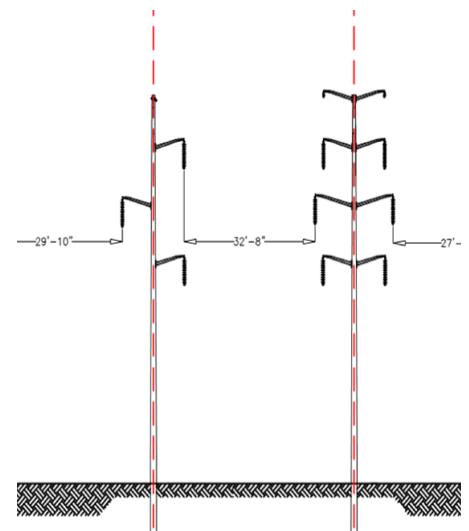
The scope of the upcoming civil construction work within the right-of-way includes vegetation management, installing gravel access roads or wood timber mats in select areas to provide access and protection from construction activities, pouring concrete foundations at some locations, and delivering and installing new structures. Timber mats will be removed at the end of the project.

During these activities there will be an increase of vehicles and team members within the area. Our employees and consultants are expected to wear their required personal protection equipment (PPE), including hard hats, high visibility vests and photo ID's.

Work will occur generally between the hours of 7:00 A.M. to 5:00 P.M. Monday through Saturday, and on Sunday as necessary. Construction will be done in phases along the corridor and is anticipated to occur between July 2024 through 2030.



*Typical Existing Condition  
in Right of Way*



*Typical New Condition  
In Right of Way*

Truck traffic will use caution while on the streets in your area leading to the access points.

If you have any questions or would like further information on construction activities specific to its proximity to your home or business, please contact our Project Hotline at [781-236-6286](tel:781-236-6286). You can also email [Gary.StFleur@nationalgrid.com](mailto:Gary.StFleur@nationalgrid.com).

Sincerely,

**Matt Watkins, Consultant**

**National Grid**

**Stakeholder Management**

## Somerset to Bridgewater Reliability Project Overview Map

