

Somerset to Bridgewater Reliability Project

Somerset, Swansea, Dighton, Berkley, Taunton, Raynham, Bridgewater MA

Project Fact Sheet

As one of your regional electricity providers, National Grid regularly updates our systems to ensure that you receive the best possible service to your home and business every day.

The Somerset to Bridgewater Reliability Project (“the Project”) will refurbish approximately 20 miles of 115kV overhead transmission lines and poles with new light duty galvanized steel structures. The existing transmission lines were originally constructed in the 1920s and 1950s. National Grid will be investing significantly in the Project to strengthen the region’s electrical transmission system.

Project details:

The Project will include:

- Site preparation including necessary vegetation removal.
- Maintaining existing access and work pads
- Installing new access roads and work pads
- Replacing existing structures with new light duty steel structures. Structure location may vary from existing locations to meet engineering standards and prioritize environmental protections.
- Installing new optical ground wire (OPGW) to improve reliability and enable troubleshooting between substations.
- Installing new structure hardware and conductor.

Quick Project Facts:

- What:** Somerset to Bridgewater Reliability Project
- Where:** Somerset, Swansea, Dighton, Berkley, Taunton, Raynham, Bridgewater, MA
- When:** Summer 2024 - 2030

Questions, Comments, Concerns?

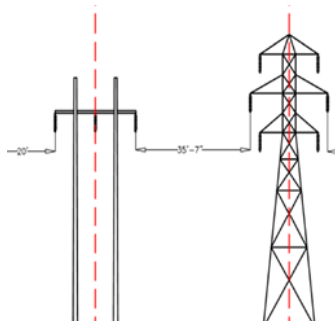
Please contact us:

 781-236-6286

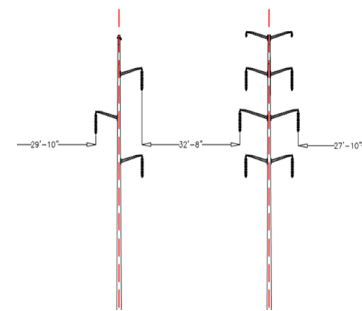
 Gary.StFleur@nationalgrid.com

What to expect during construction:

Residents can anticipate increased activity within the Project right-of-way. This includes increased personnel presence, construction equipment throughout the Project, material deliveries to site and active construction.



Typical Existing Condition in Right of Way



Typical New Condition in Right of Way

Somerset to Bridgewater Reliability Project Overview Map



[NATIONALGRIDUS.COM/CONSTRUCTION-PROJECTS](https://nationalgridus.com/construction-projects)