

302 Millbury - Carpenter Hill 345kV Line Asset Condition Refurbishment

Charlton, Oxford, Auburn, Millbury, & Sutton, MA

As one of your regional electricity providers, National Grid regularly updates our systems to ensure that you receive the best possible service to your home and business every day.

The 302 Millbury – Carpenter Hill 345kV Line Asset Condition Refurbishment Project (“the Project”) will consist of addressing immediate maintenance needs including the replacement of 19 existing wooden structures with steel structures, and insulators at 3 additional structures.

Project details:

The Project will include:

- Site preparation including necessary vegetation removal.
- Maintaining existing access and work pads.
- Installing new access roads and work pads.
- Replacing 345kV wood structures with engineered steel H-frame structures.
- Installing new structure hardware.

What to expect during construction:

- **Residents can anticipate increased activity** within the Project right-of-way. This includes increased personnel presence, construction equipment throughout the Project, material deliveries to site and active construction.

Quick Project Facts:

- What:** 302 Millbury - Carpenter Hill Asset Condition Refurbishment Project
- Where:** Charlton, Oxford, Auburn, Millbury, & Sutton
- When:** December 2024 - June 2029

Questions or Concerns?

Please contact us:



781-236-6286

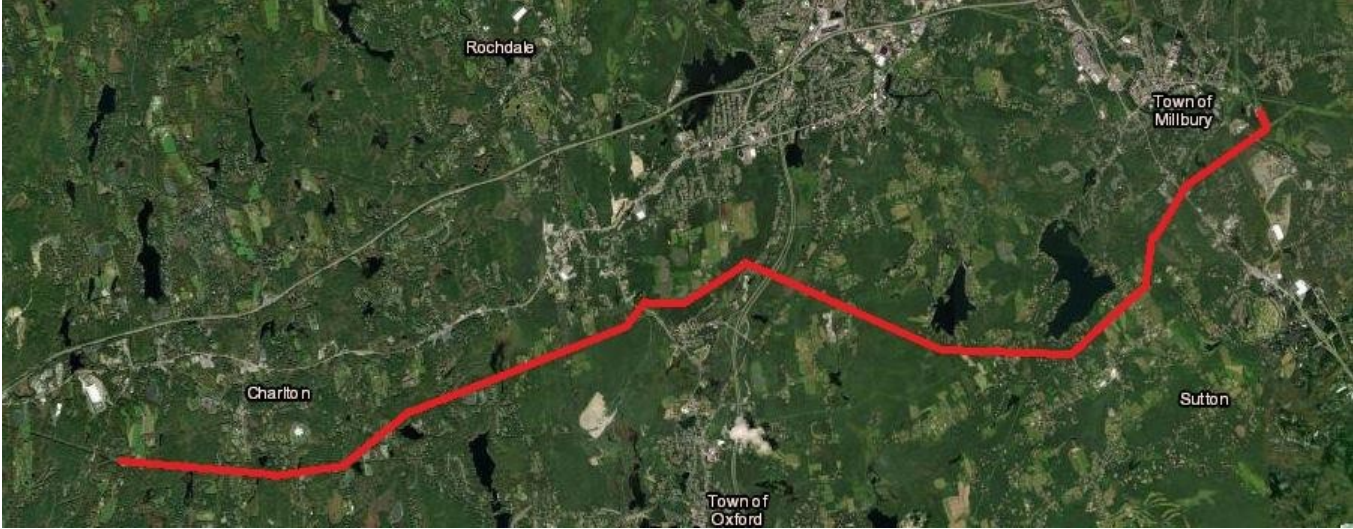


James.King1@nationalgrid.com



Example Right-of-Way

302 Millbury – Carpenter Hill 345kV Line Asset Refurbishment PROJECT MAP



[NATIONALGRIDUS.COM/CONSTRUCTION-PROJECTS](https://nationalgridus.com/construction-projects)